

### **Roberts Machining Solutions Develop Innovative Solution for Minimising Weld Failures.**

Roberts Machining Solutions (RMS) have developed an innovative solution for minimising weld failures when using the cold metal transfer welding process.

The cold metal transfer (CMT) welding process has been proven to reduce fabrication costs by up to 60%.

The solution involves internal and external pipe deformers which can re-shape the tubulars to within 0.010" of roundness.

The internal pipe deformers have either four or eight 25 tonne capacity hydraulic cylinders. A Vernier Calliper is used to check the internal diameter in eight places. Once the readings are taken, each hydraulic cylinder is energised appropriately to deform the pipe until a total indicator reading of 0.010" is achieved

Standard API pipe end roundness tolerance can be up to 10% of the diameter. The accuracy & repeatability of the pipe roundness and the weld preparation that is achieved by using RMS equipment is ideal for the production of consistent high quality welds using the CMT process.

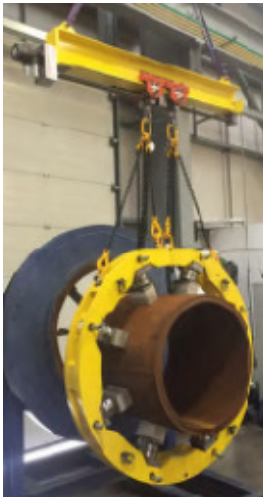
#### PICTURES WITH CAPTIONS



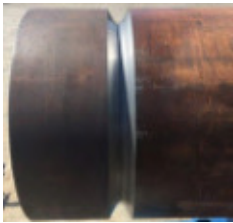
- Internal pipe deformed being loaded into pipe end.



- Internal pipe deformer dial test indicator assembly



- External split frame pipe deformer with motorised opening, closing assembly.



- Perfect fit up of tubular prior to welding.



- High quality butt weld.